

**AYUNTAMIENTO DE  
VALDEFRESNO. LEÓN**

**PROYECTO BÁSICO Y DE  
EJECUCIÓN**

---

**AMPLIACIÓN DEL  
AYUNTAMIENTO DE  
VALDEFRESNO**

**(FASE 3)**

---

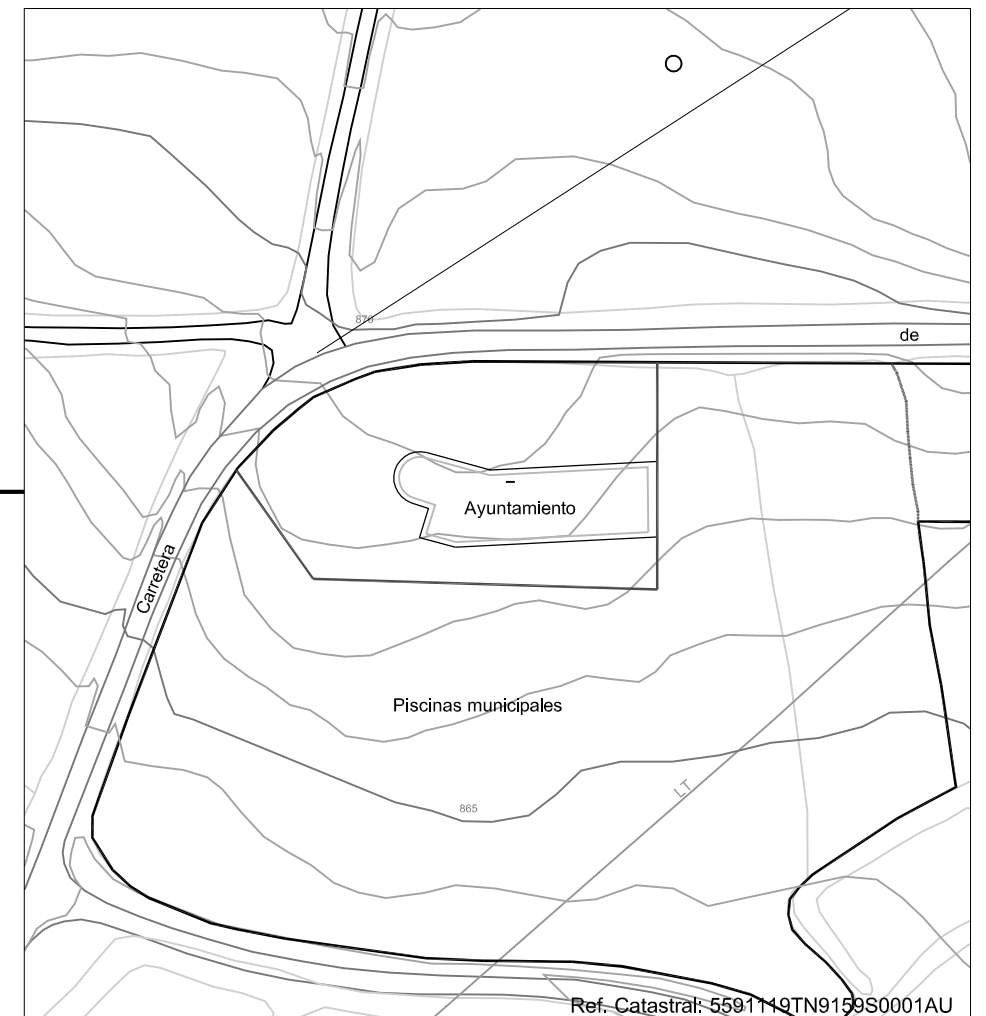
**PLANOS**

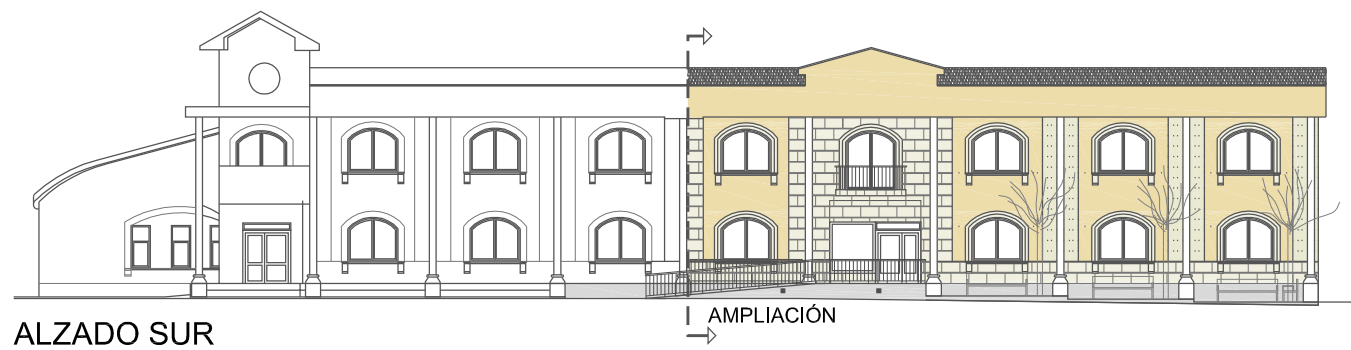
---



rodríguezvalbuena  
**ARQUITECTOS**  
arquitectura y urbanismo

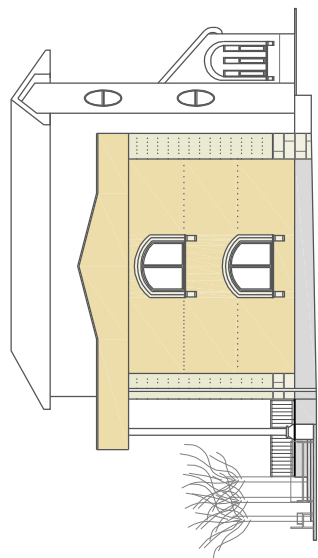
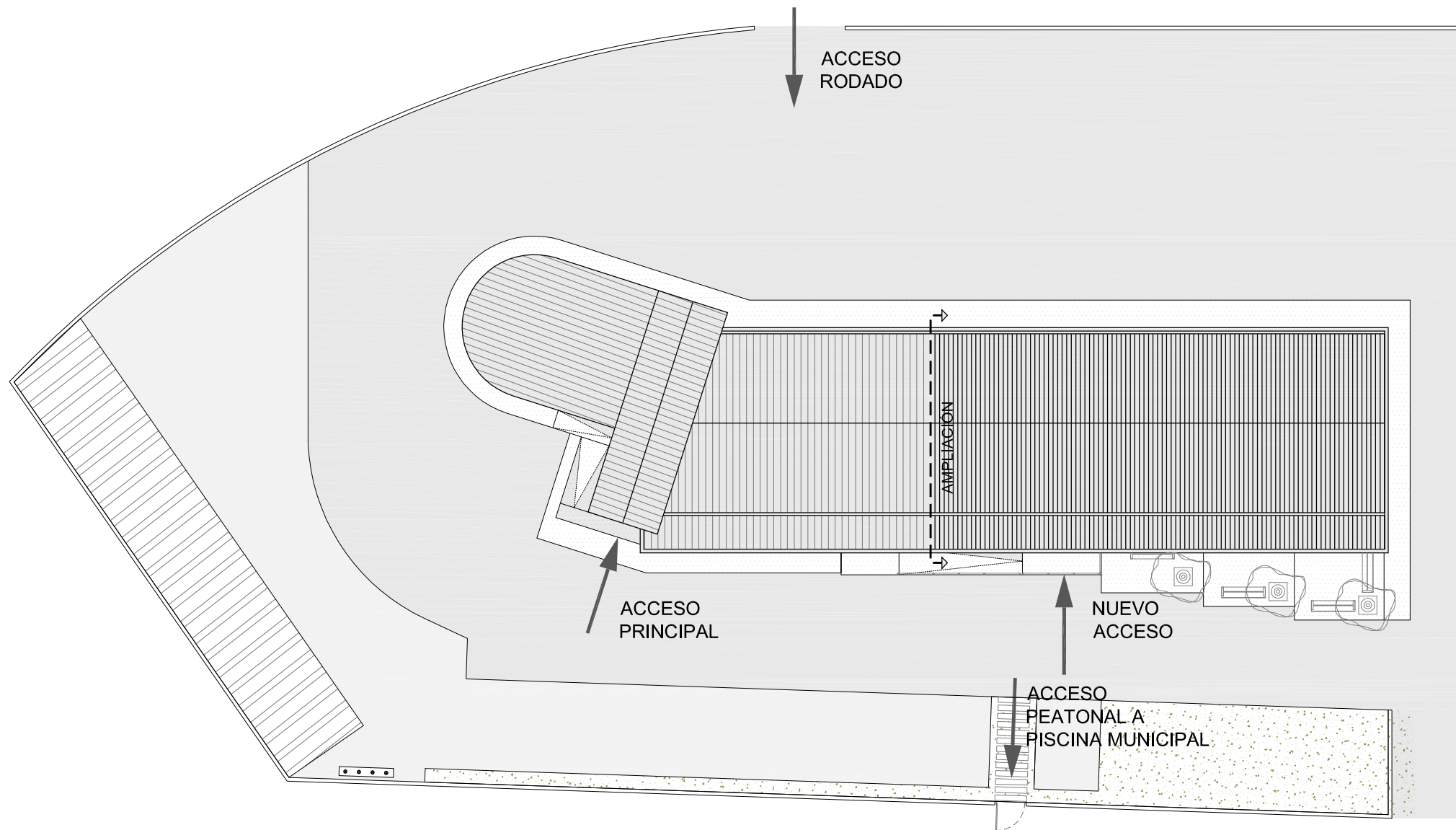
**SEPTIEMBRE 2012**





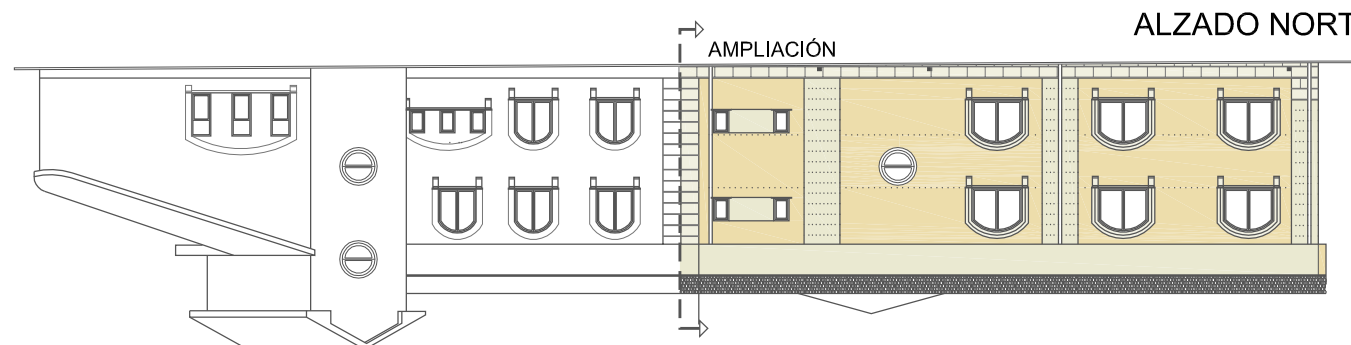
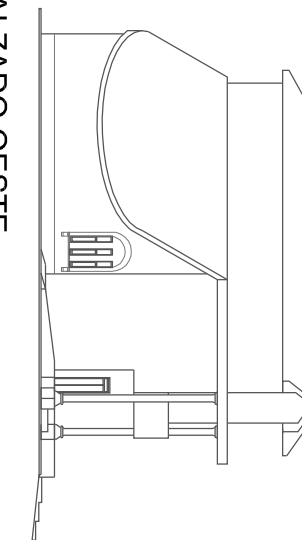
ALZADO SUR

AMPLIACIÓN



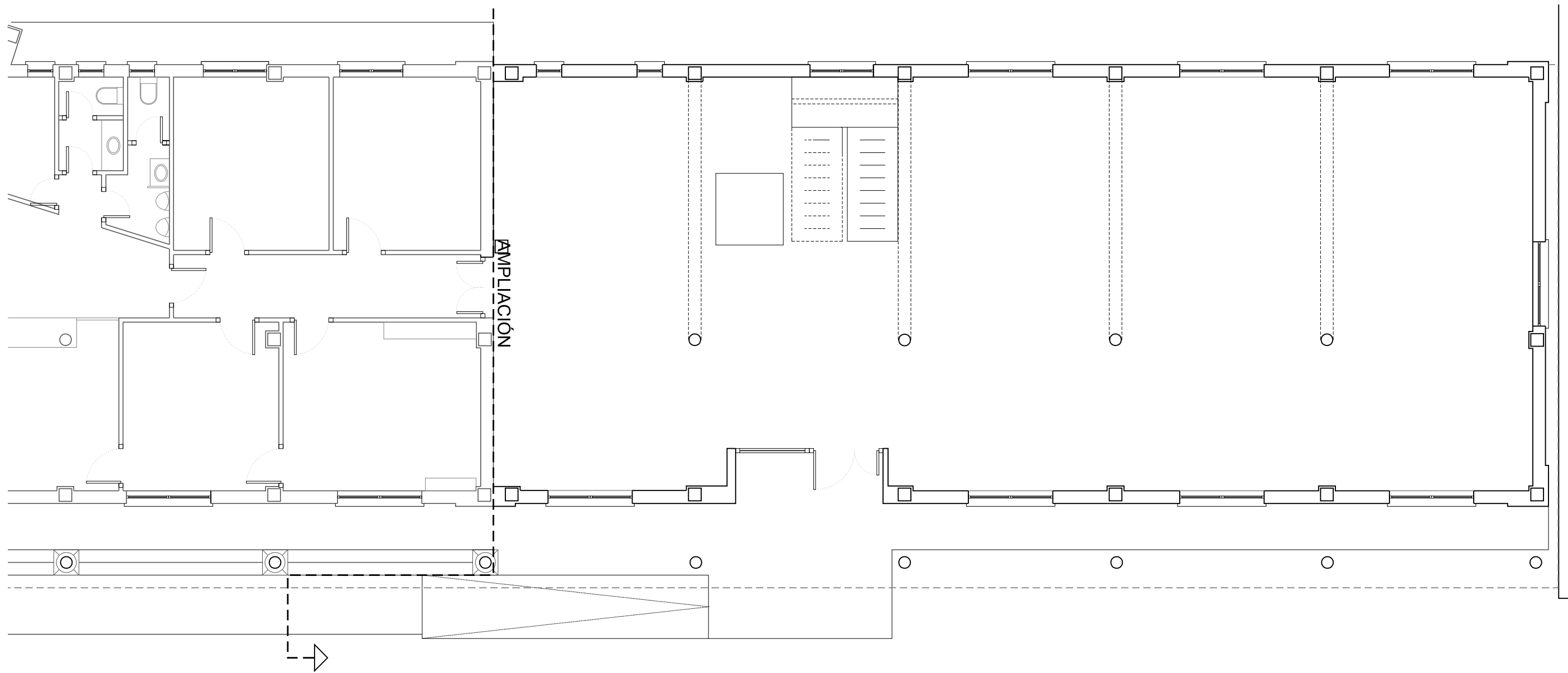
ALZADO ESTE

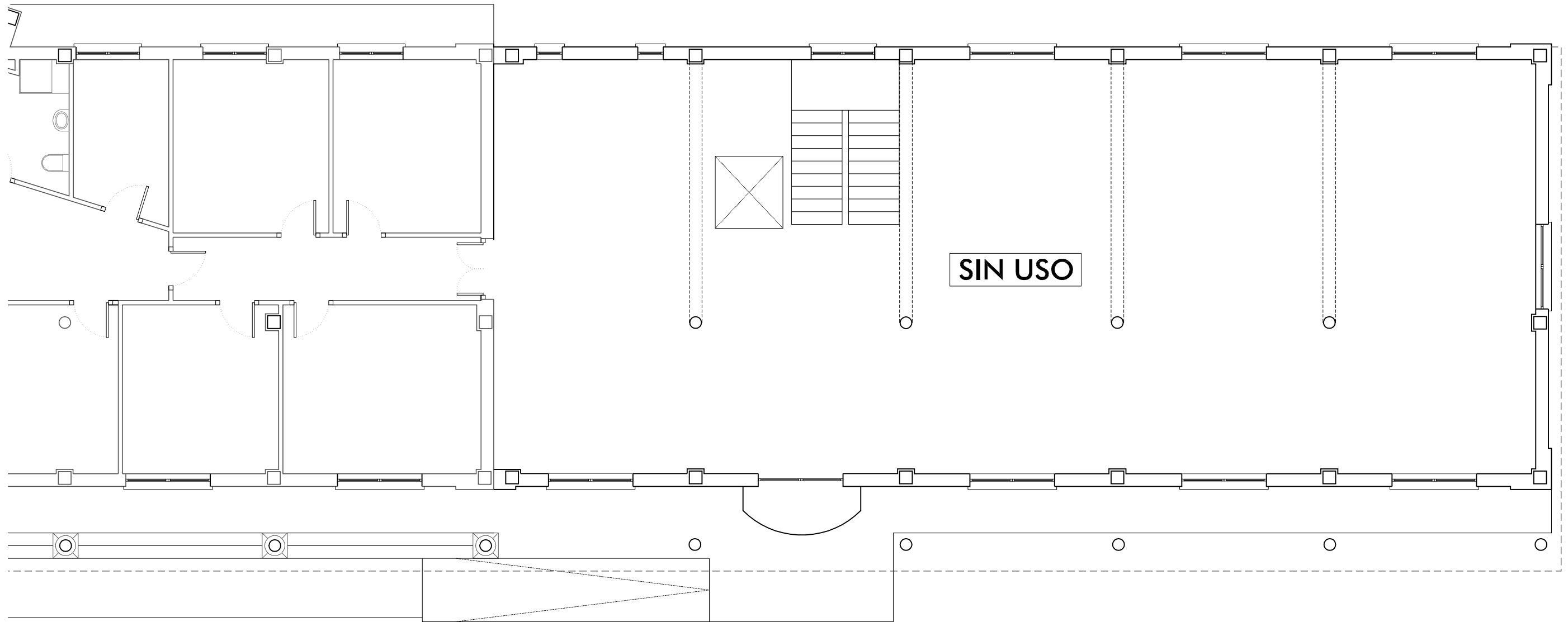
ALZADO OESTE



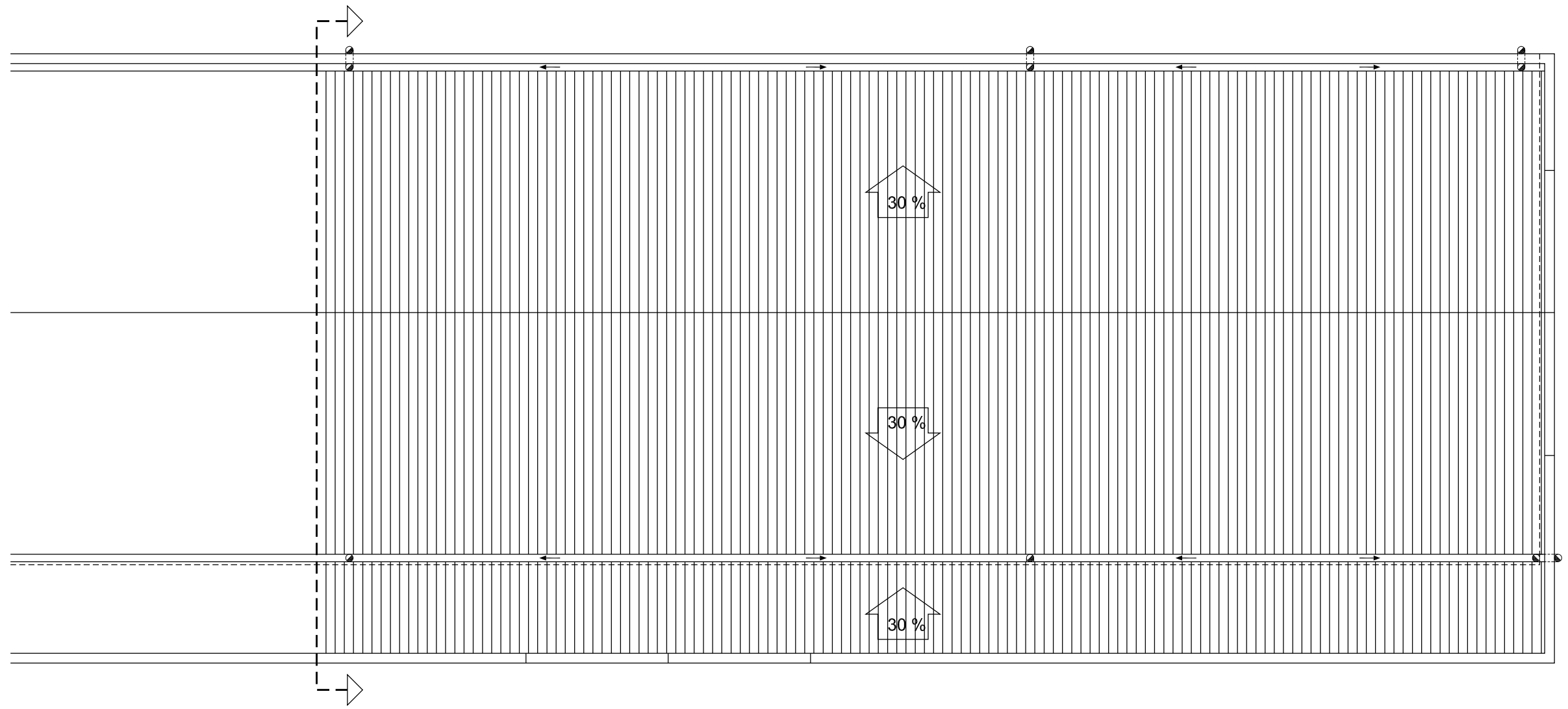
ALZADO NORTE

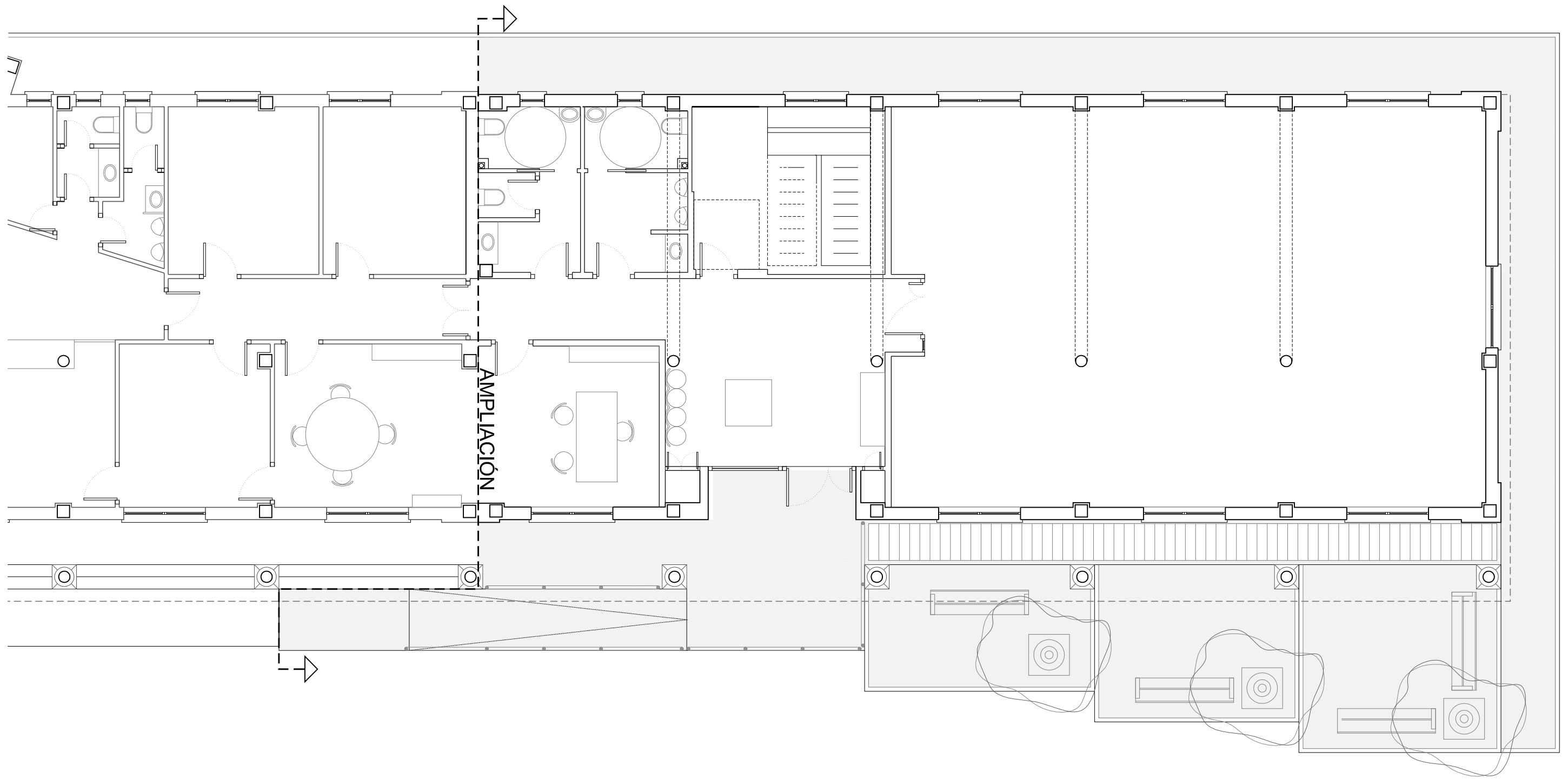
AMPLIACIÓN



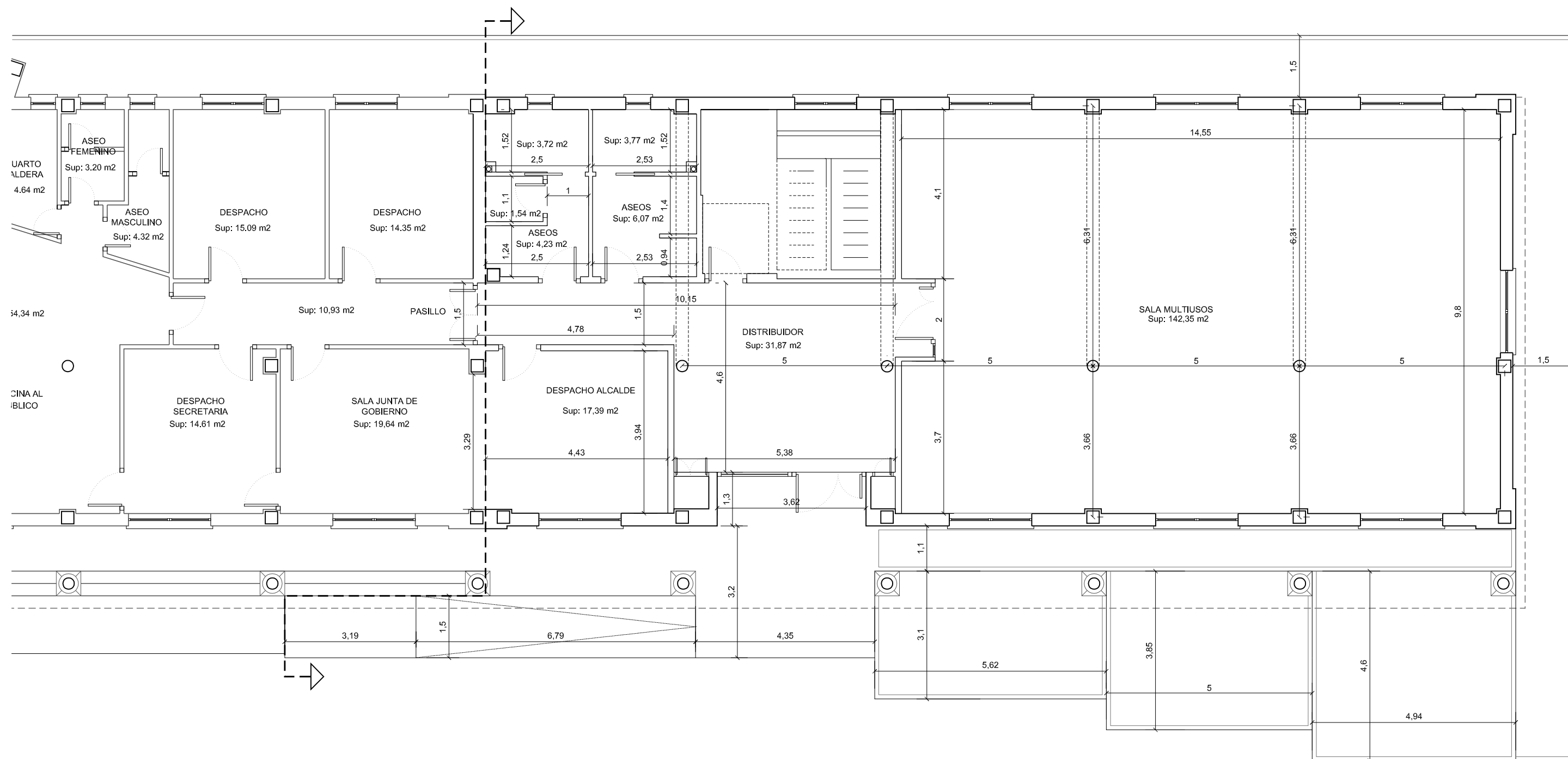


SIN USO





USO	SUP. ÚTIL
Distribuidor	31,87
Despacho Alcalde	17,39
Aseos mujer	9,49
Aseos hombre	9,84
Sala multiusos	142,35
<b>TOTAL SUPERFICIE ÚTIL</b>	<b>210,94</b>



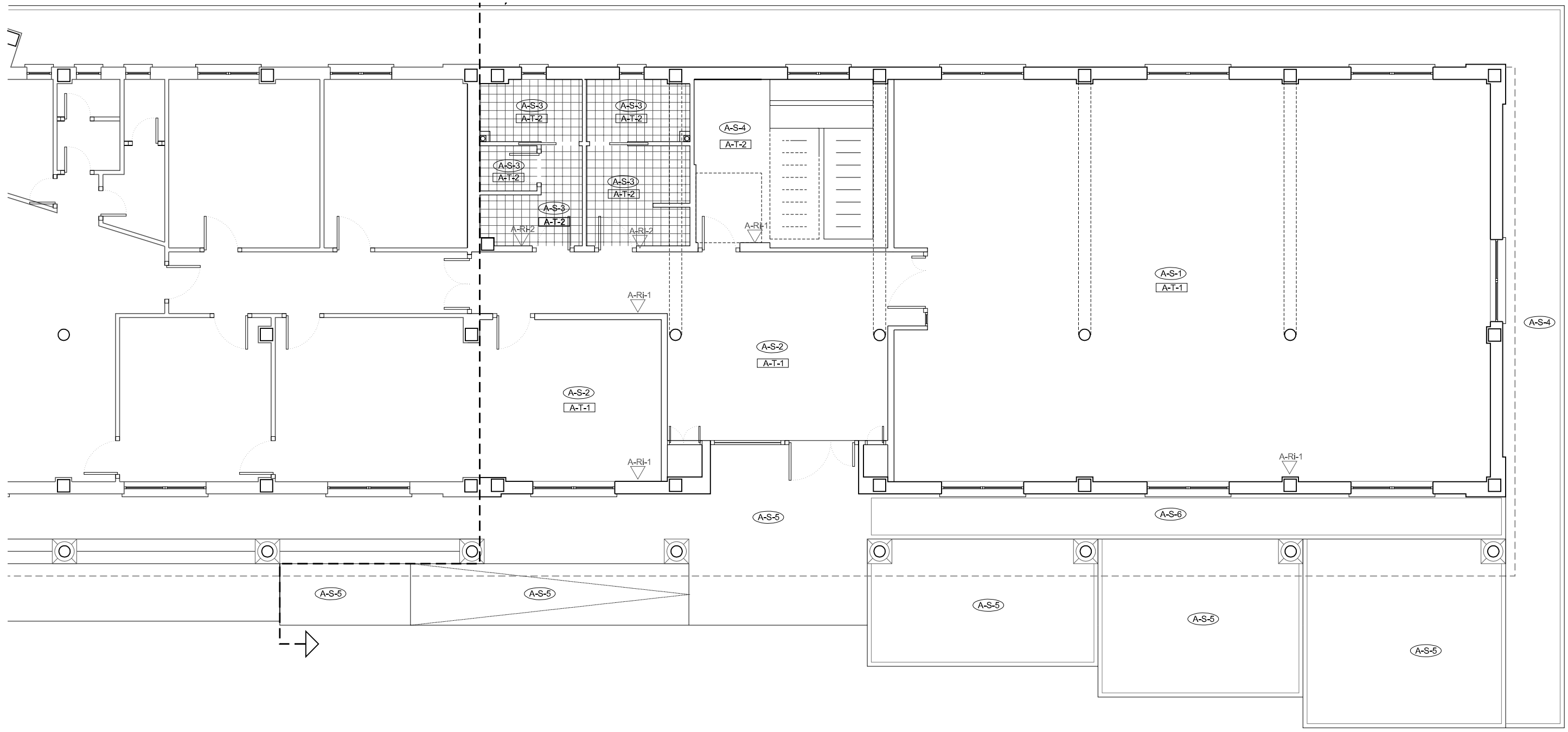


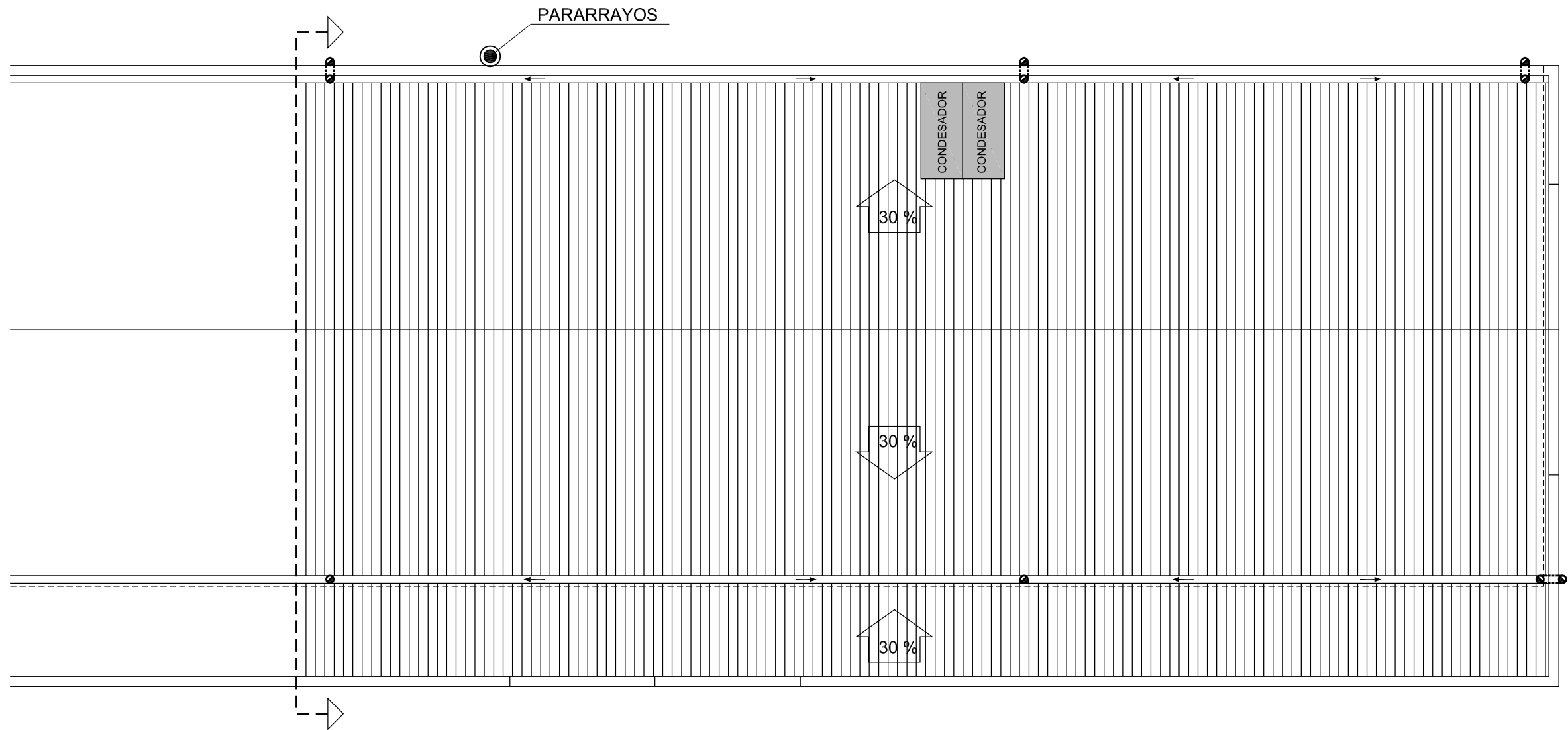
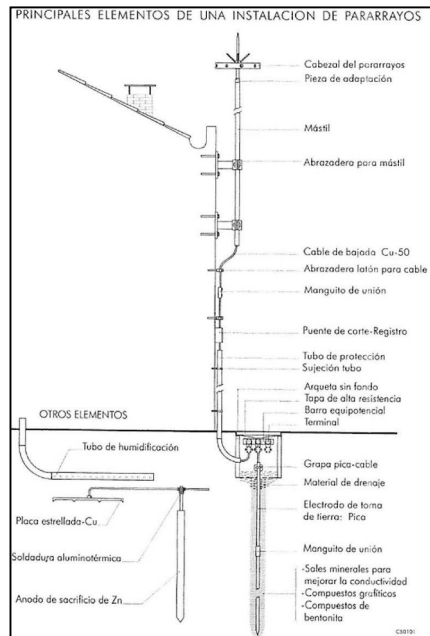
△ Acabados verticales    □ Acabados techos  
 ○ Acabados suelos





**ACABADOS: REVESTIMIENTOS INTERIORES**  
 ACABADO TIPO 1 (A-Ri-1)  
 - pintura  
 ACABADO TIPO 2 (A-Ri-2)  
 - alicatado baño

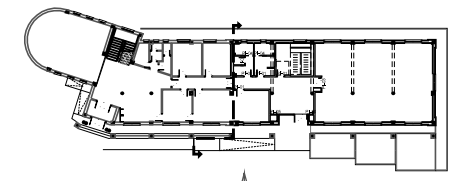
**ACABADOS: REVESTIMIENTOS TECHOS**  
 TECHO TIPO 1 (A-T-1)  
 - techo técnico tipo "Armstrong" 60x60  
 TECHO TIPO 2 (A-T-2)  
 - techo continuo yeso laminado

**ACABADOS: REVESTIMIENTOS SUELOS**  
 SUELO TIPO 1 (A-S-1)  
 - parquet laminado  
 SUELO TIPO 2 (A-S-2)  
 - mármol marfil pulido 60x40  
 SUELO TIPO 3 (A-S-3)  
 - gres 40x20  
 SUELO TIPO 4 (A-S-4)  
 - mortero  
 SUELO TIPO 5 (A-S-5)  
 - granito rosa porriño flameado 60x40  
 SUELO TIPO 6 (A-S-6)  
 - bolos de piedra





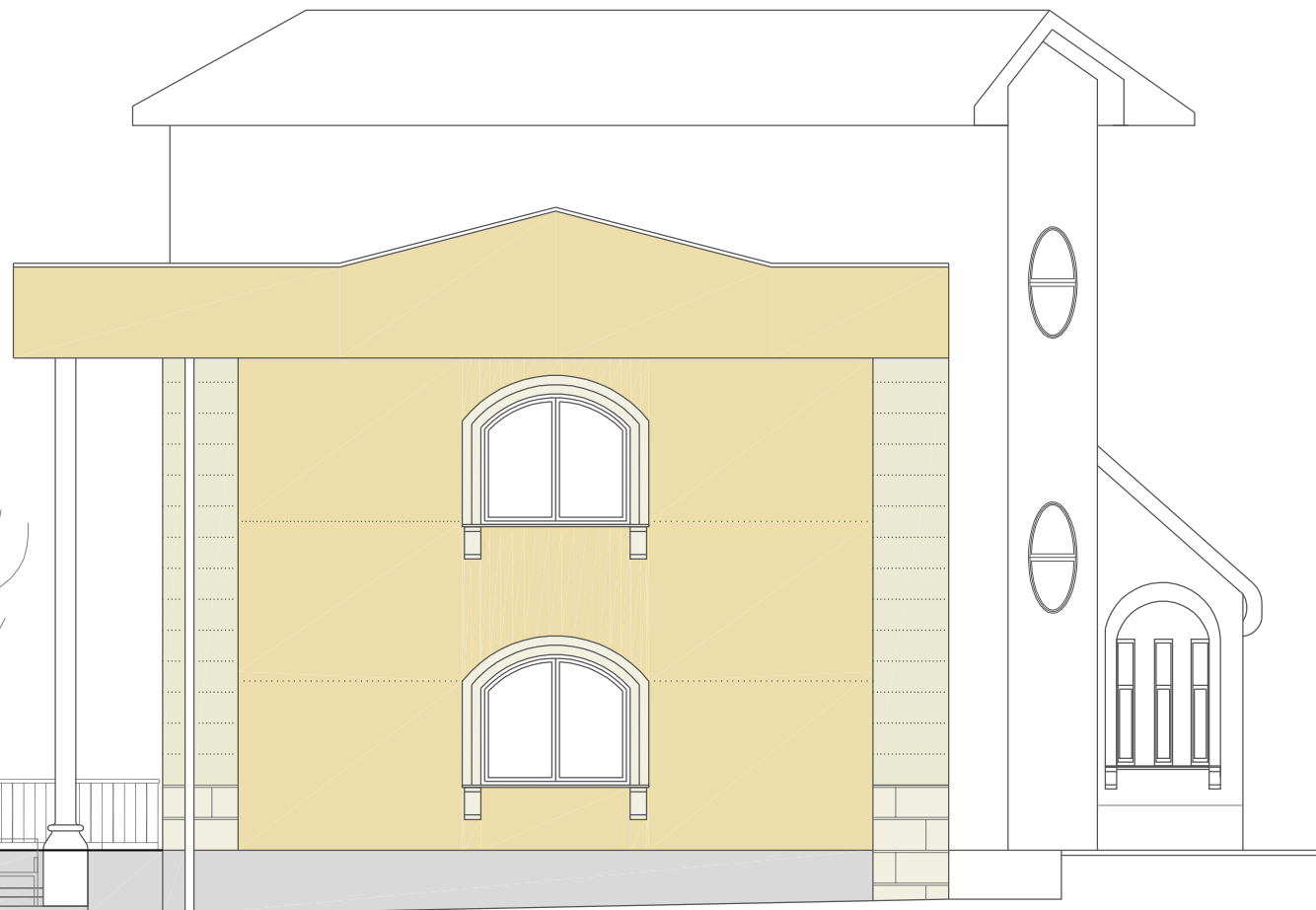
-  Revestimiento de piedra de Boñar e=3cm con junta rehundida de 3cm de altura  
Zócalo: piezas de 71,5x41,5  
Frontal acceso: piezas de 71,5x43
-  Revestimiento monocapa e=1,5cm color similar a la piedra de Boñar según especificaciones de la d.f.
-  Revestimiento monocapa e=1,5cm color tierra según especificaciones de la d.f.
-  Revestimiento de granito rosa porriño flameado e=3cm






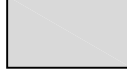
ALZADO PRINCIPAL

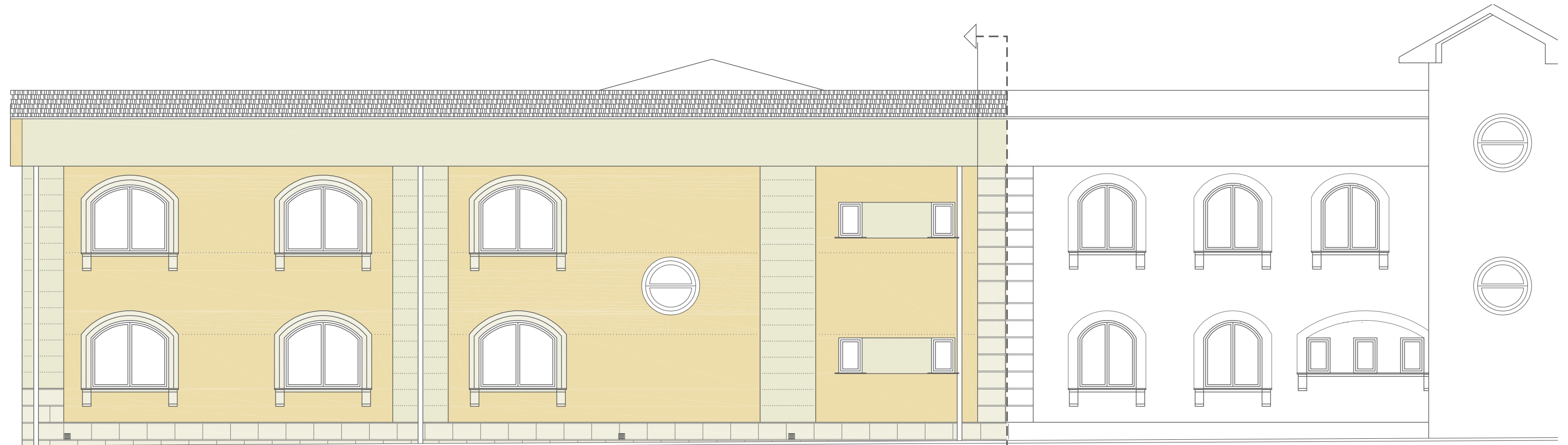
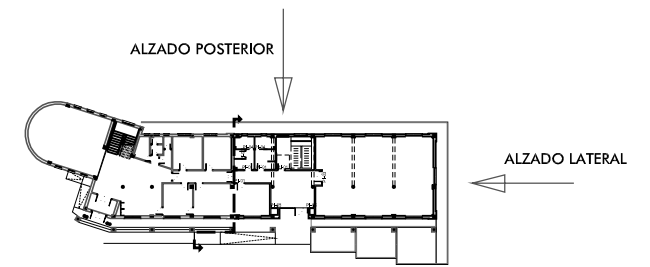


ALZADO PRINCIPAL

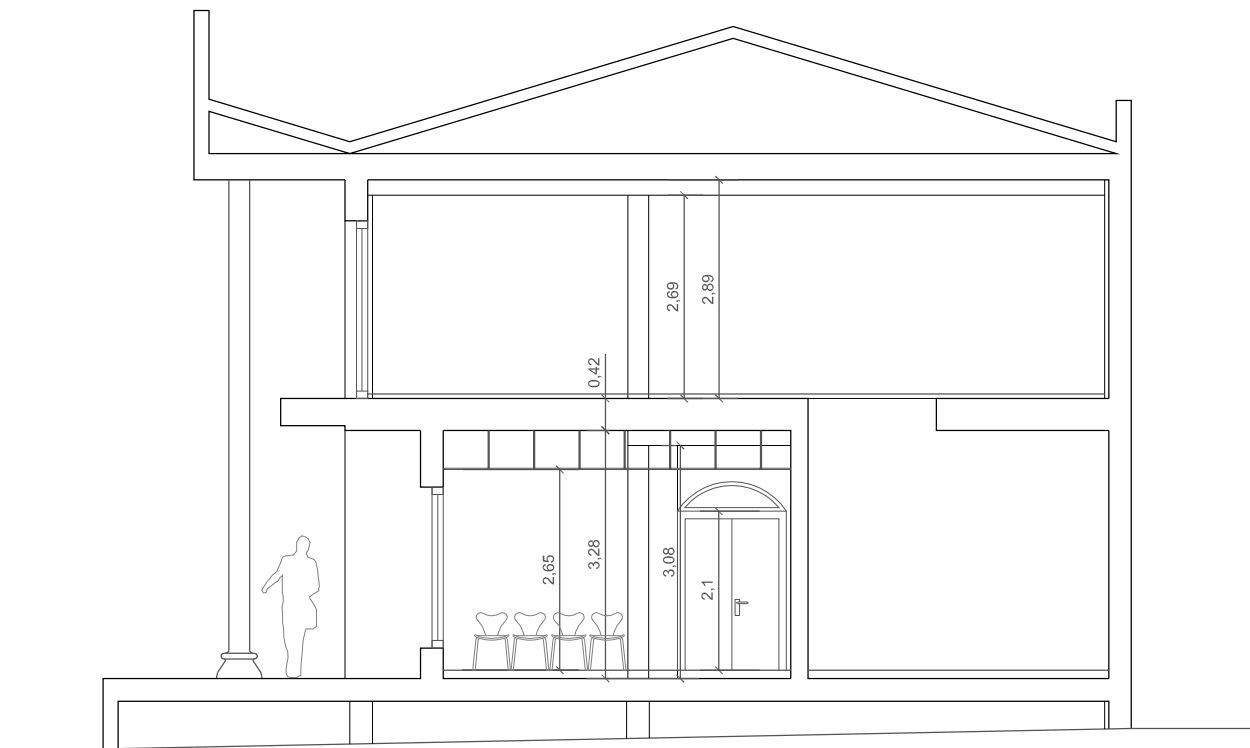


ALZADO LATERAL

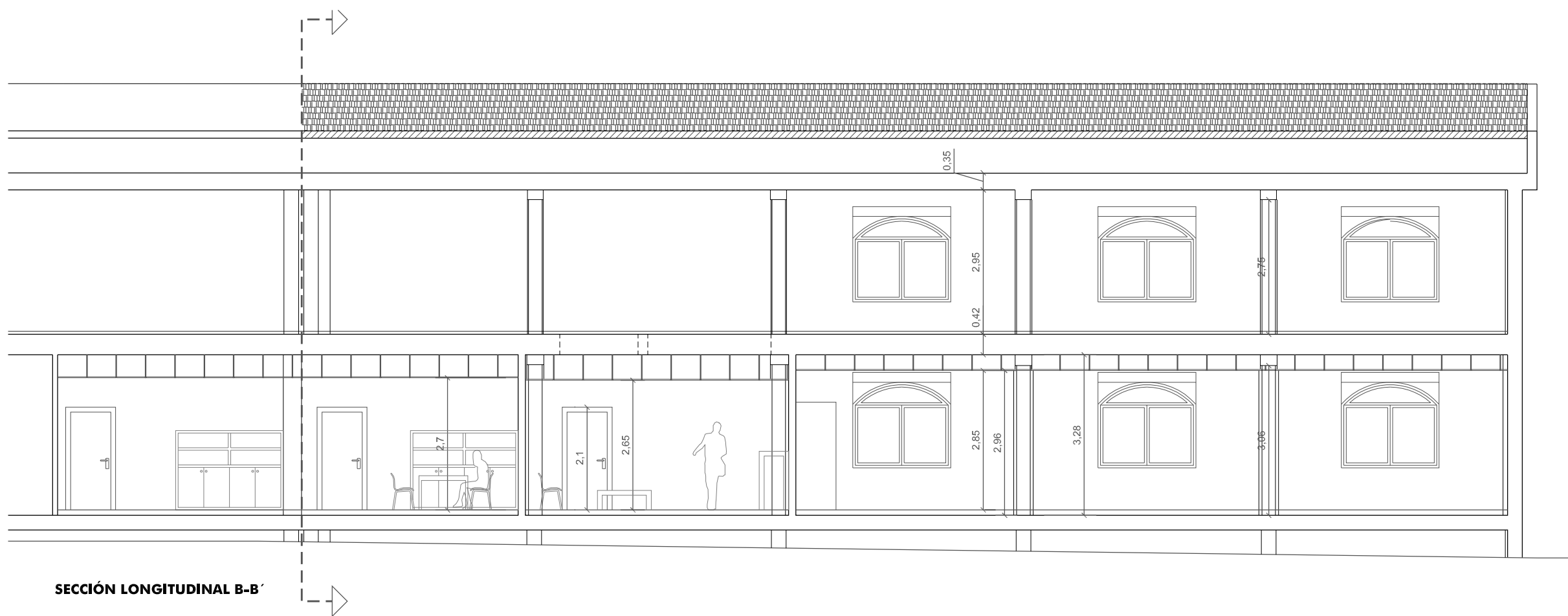
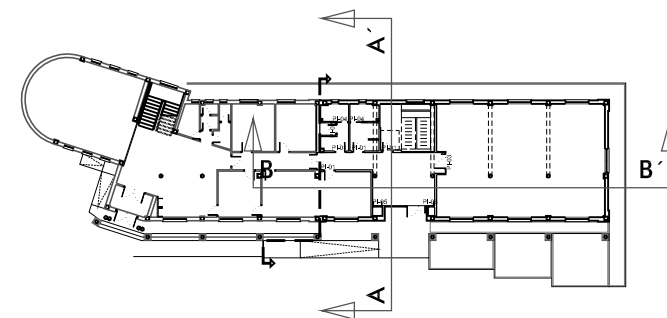
- 
 Revestimiento de piedra de Boñar e=3cm con junta rehundida de 3cm de altura  
 Zócalo: piezas de 71,5x41,5  
 Frontal acceso: piezas de 71,5x43
- 
 Revestimiento monocapa e=1,5cm color similar a la piedra de Boñar según especificaciones de la d.f.
- 
 Revestimiento monocapa e=1,5cm color tierra según especificaciones de la d.f.
- 
 Revestimiento de granito rosa porriño flameado e=3cm



ALZADO POSTERIOR



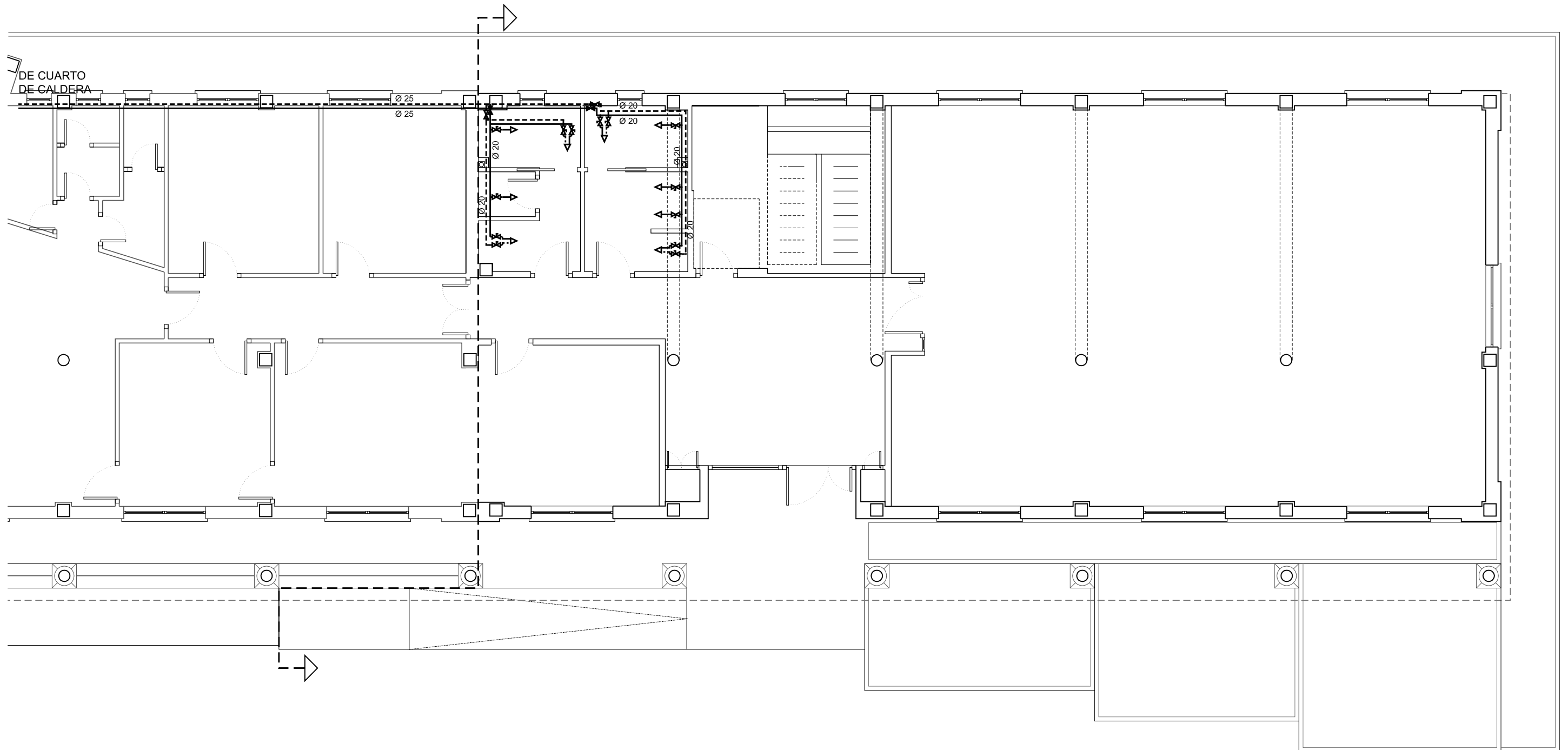
SECCIÓN TRANSVERSAL A-A'



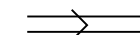
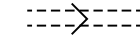






SECCIÓN LONGITUDINAL B-B'

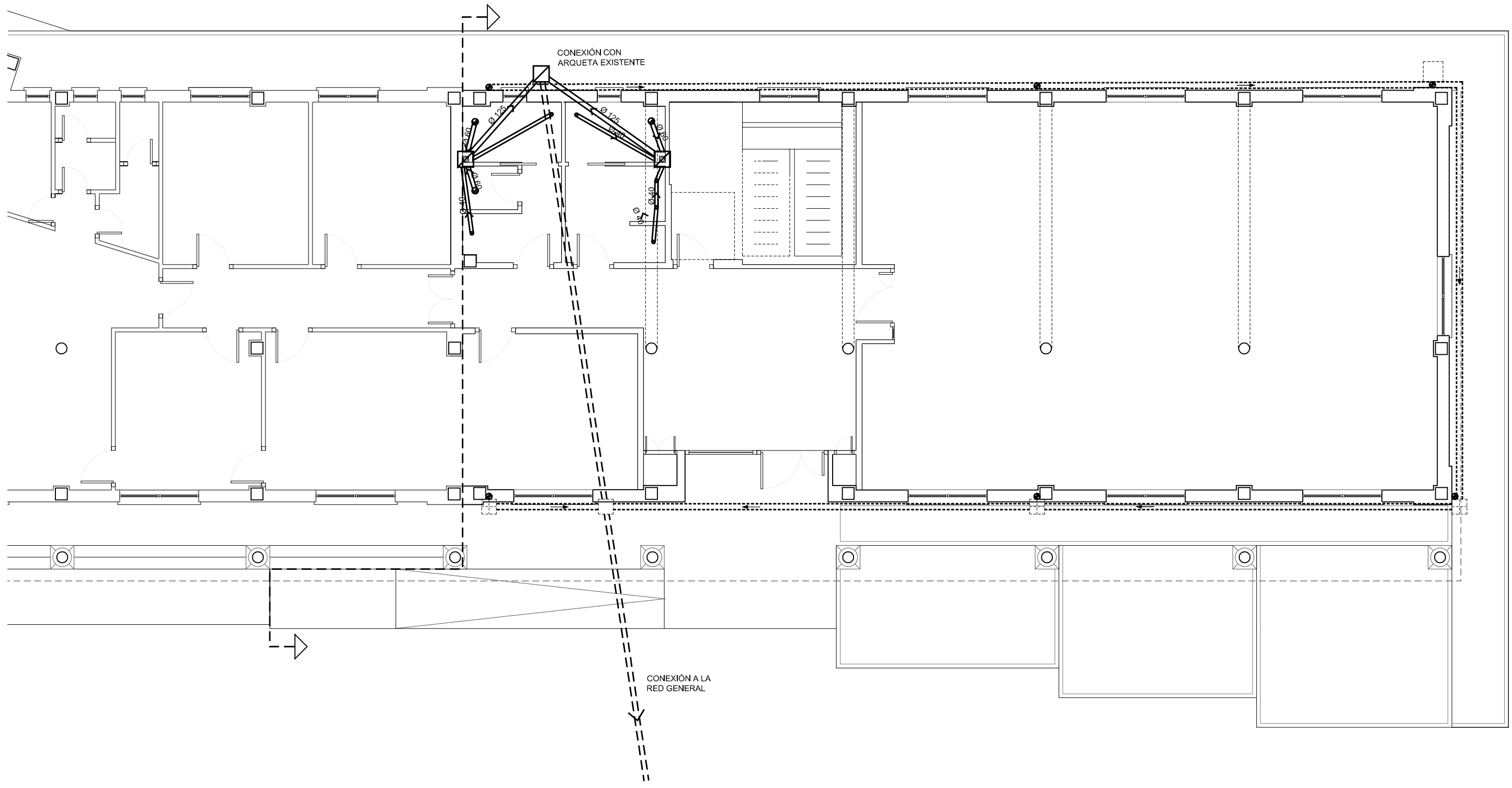
**FONTANERÍA**

- RED AGUA FRÍA
- - - RED AGUA CALIENTE
- ↕ GRIFO
- ↕ GRIFO MONOMANDO
- ⌵ LLAVE DE PASO


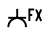









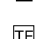




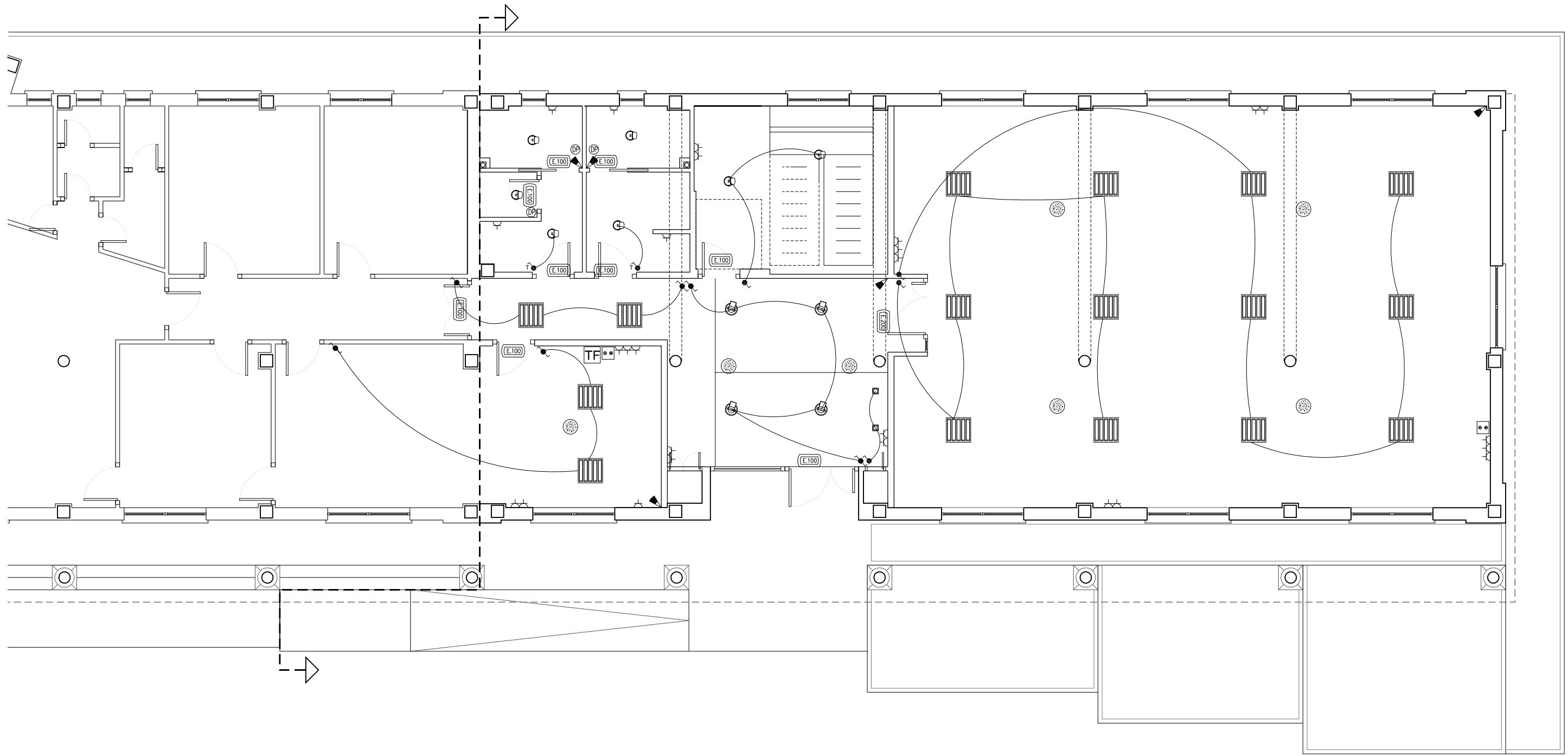
**SANEAMIENTO**

-  RED PROYECTADA
-  RED EXISTENTE
-  DESAGÜE
-  SIFÓN
-  ARQUETA
-  RED DE PLUVIALES
-  BAJANTE DE PLUVIALES
-  ARQUETA DE PLUVIALES




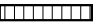
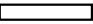
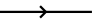
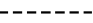

**LEYENDA**

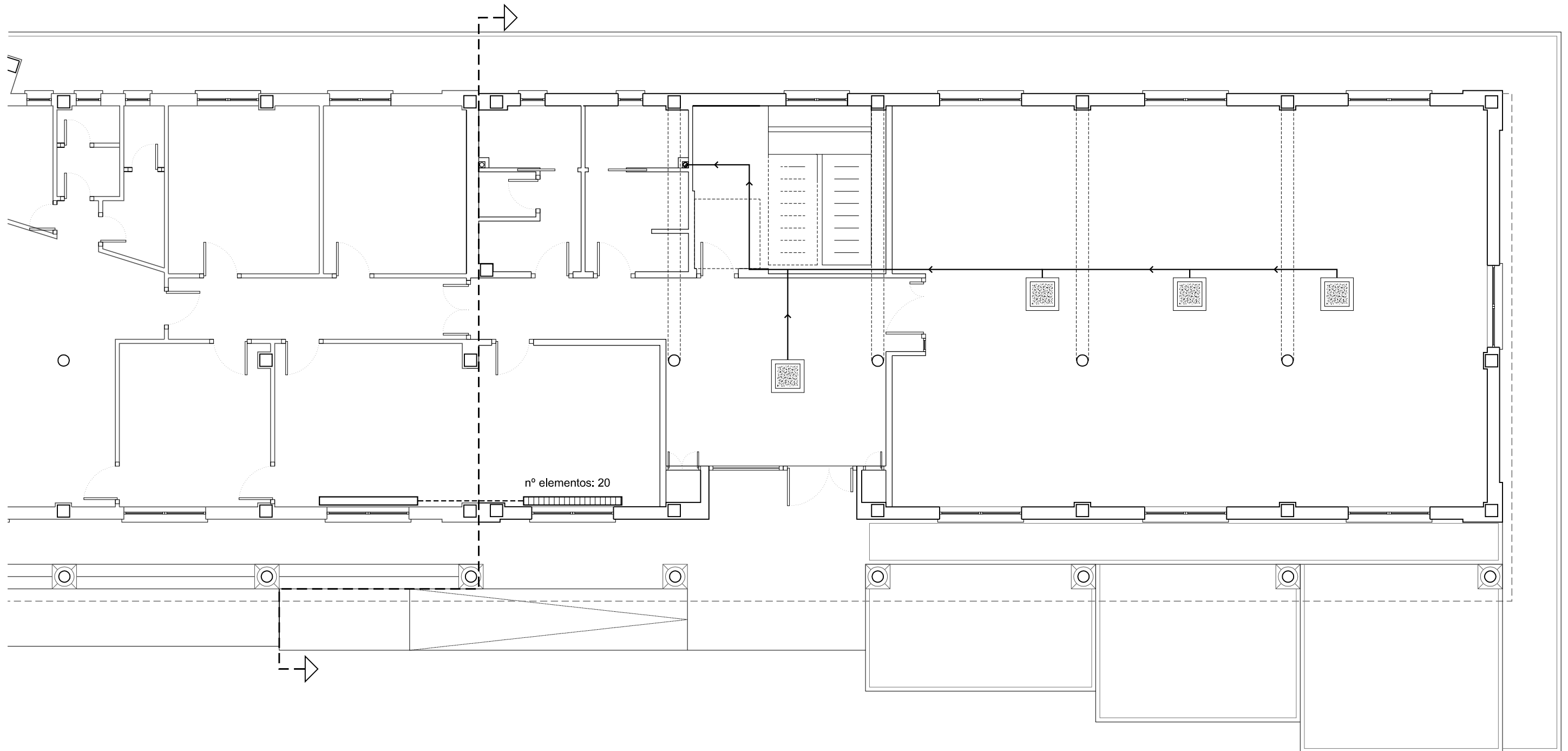
- |   |  |   |                                   |
|---|--|---|-----------------------------------|
|  | LUMINARIA  |  | TC 16A (FX: circuito)             |
|  | DOWNLIGHT EMPOTRABLE TC-TEL 2x26W. IP23<br><small>(ALX circuito)</small> |  | DETECTOR PRESENCIA                |
|  | DOWNLIGHT EMPOTRABLE TC-TEL 1x26W. IP44                                  |  | HILO MUSICAL                      |
|  | DOWNLIGHT CUADRADO ORNALUX MINIPLANETARIO QR-CBC51 50W. IP23             |  | DETECTOR DE MOVIMIENTO            |
|  | INTERRUPTOR SENCILLO   |  | EMERGENCIA IP42 IK07 (nº Lúmenes) |
|  | INTERRUPTOR CON TEMPORIZADOR   |  | TOMA TV                           |
|  | CONMUTADOR   |  | TOMA TELÉFONO                     |








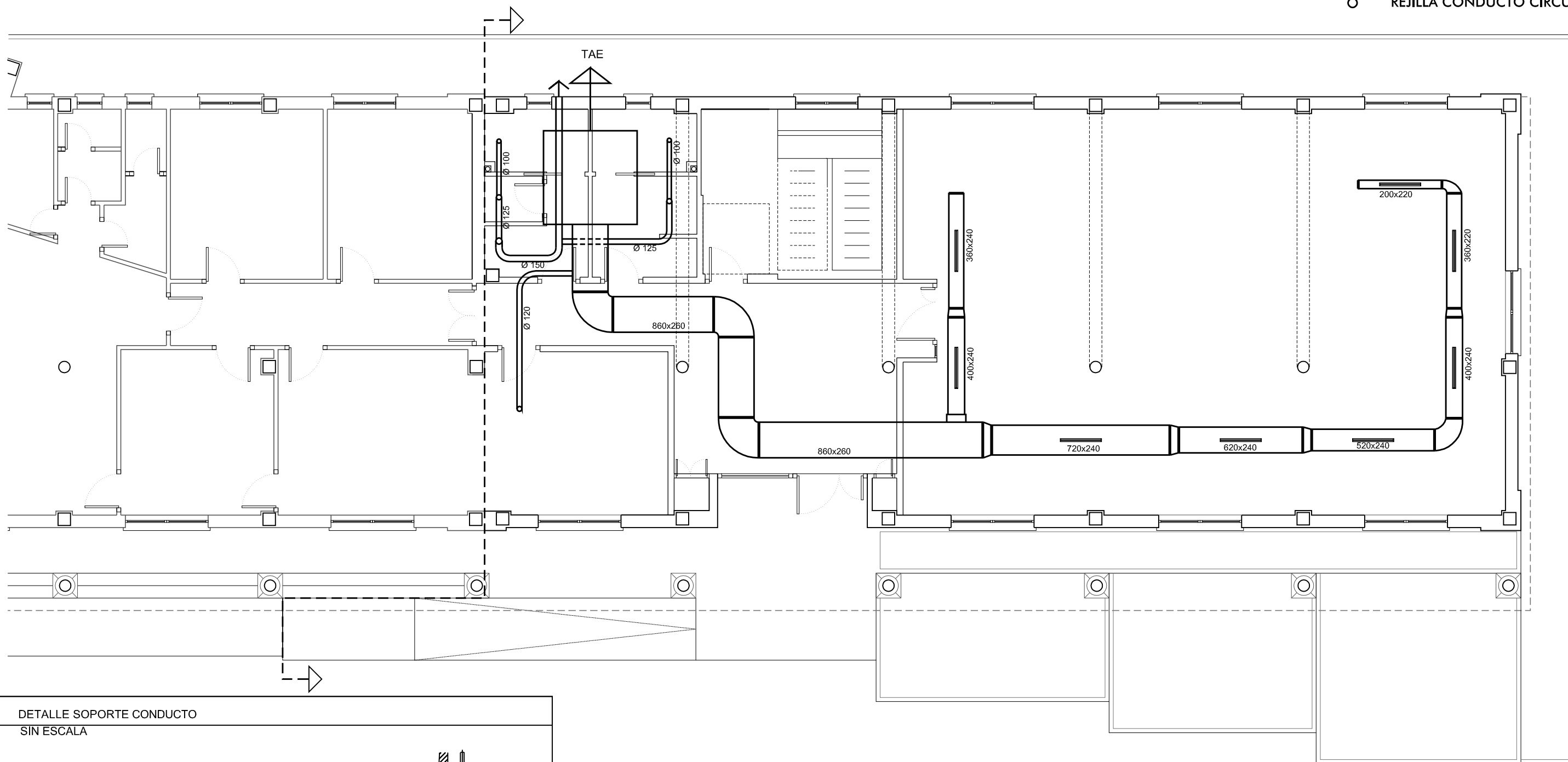
### CALEFACCIÓN

-  BOMBA DE CALOR
-  NUEVO RADIADOR
-  RADIADOR EXISTENTE
-  DESAGÜE
-  CONEXIÓN ENTRE RADIADORES
-  BAJANTE

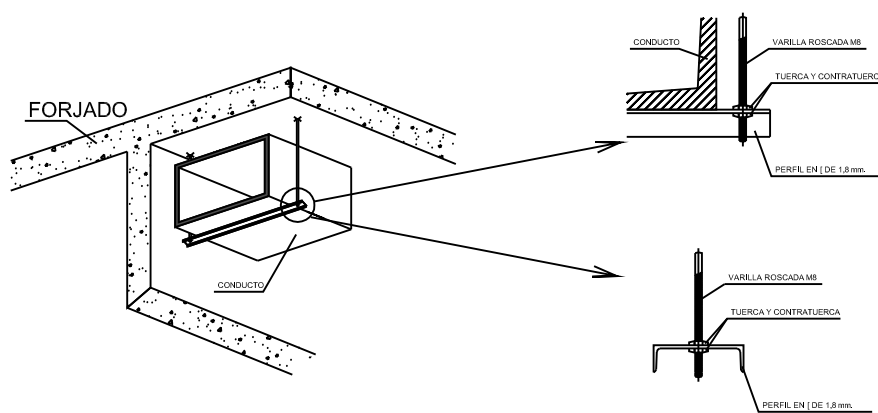


**LEYENDA EXTRACCIÓN**

-  CONDUCTO
-  REJILLA CONDUCTO RECTANGULAR
-  REJILLA CONDUCTO CIRCULAR

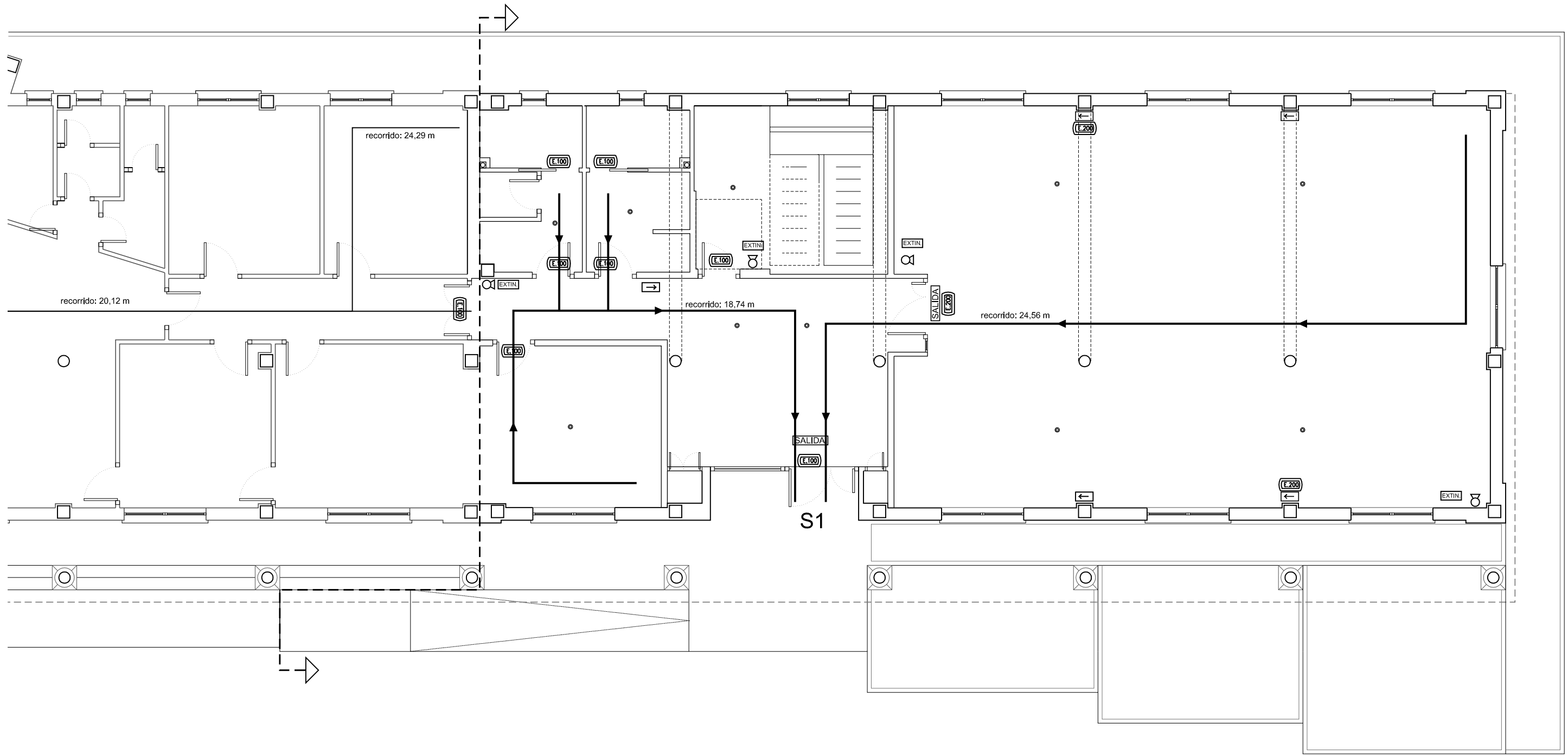


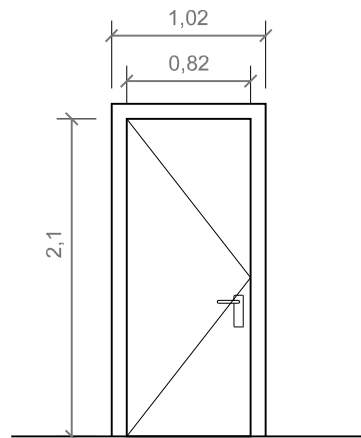
DETALLE SOPORTE CONDUCTO  
SIN ESCALA



### SEGURIDAD EN CASO DE INCENDIO

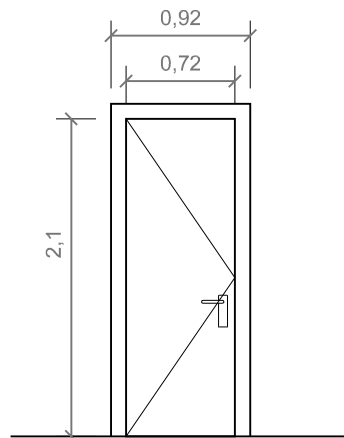
- RECORRIDO DE EVACUACIÓN
- ☉ EXTINTOR
- DETECTOR DE HUMO
- (E.100) LUZ DE EMERGENCIA
- SEÑALIZACIÓN RECORRIDO
- EXTIN. SEÑALIZACIÓN EXTINTOR
- SALIDA SEÑALIZACIÓN SALIDA





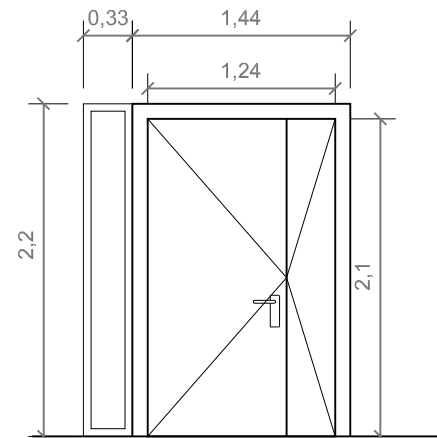
**PI-01**

Puerta abatible  
Madera  
4 Unidades  
Hoja: 0,82x2,10  
Herrajes de acero inox.  
(sentido apertura según planos)



**PI-02**

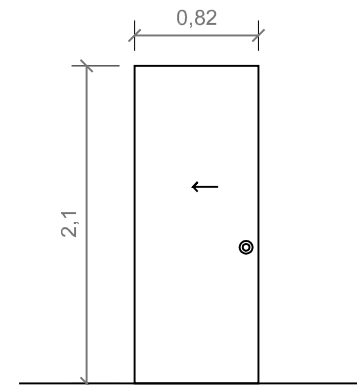
Puerta abatible  
Madera  
1 Unidad  
Hoja: 0,72x2,10  
Herrajes de acero inox.  
(sentido apertura según planos)



**PI-03**

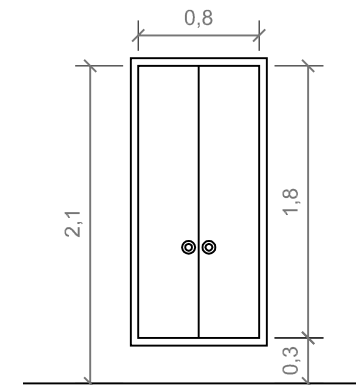
Puerta abatible de doble hoja  
Madera  
1 Unidad  
Hoja: 0,92x2,10  
Herrajes de acero inox.  
(sentido apertura según planos)

Vidrio fijo lateral



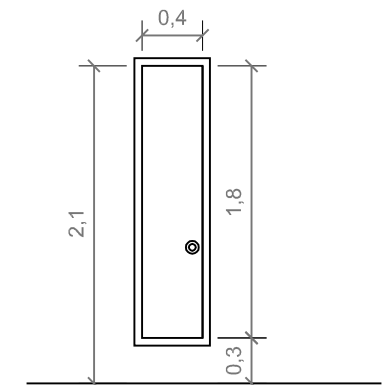
**PI-04**

Puerta corredera  
Casette empotrable  
2 Unidades  
Hoja: 0,82x2,10  
Herrajes de acero inox.  
Cierre con llave exterior



**PI-05**

Armario empotrado  
Casette empotrable  
1 Unidad  
Hoja: 0,40x1,80  
Herrajes de acero inox.



**PI-06**

Armario empotrado  
Casette empotrable  
1 Unidad  
Hoja: 0,40x1,80  
Herrajes de acero inox.

